



DESUPERHEATER NOZZLE

With the desuperheater nozzle, the temperature of hot steam can be regulated through a direct inject of water into the steam pipeline. In case of pressure drop in the system, the movable insert of the nozzle serves as a check valve, and thus prevents pressure shocks on the feeder pipe.

Combined with contact thermostat, motorized or solenoid valves, desuperheating can be automated with this nozzle.

STANDARD – SPRAY ANGLE

30°-90°

other angles on request.



POSSIBLE APPLICATIONS

turbine constructions
steam systems

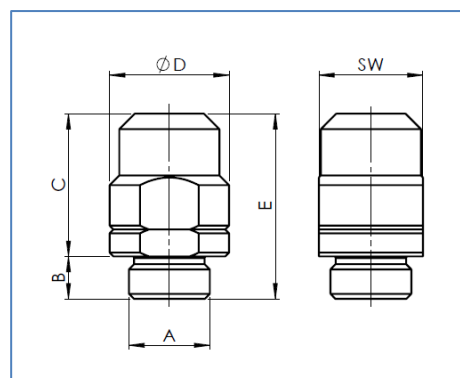
AVAILABLE IN THE FOLLOWING MATERIALS

Stainless Steel

1.4435 (X2 CrNiMo 18-14-3)

other materials on request.

DIMENSIONS						
type	A mm	B mm	C mm	ØD mm	E mm	SW mm
H 02	R1/4"	9	27	20	36	17
H 03	R3/8"	10	31	24.5	41	22
H 04	R1/2"	11	36	31	47	27
H 05	R3/4"	15	44	39.5	59	36
H 06	R1"	18	51	44.5	69	40





DESUPERHEATER NOZZLE

CAPACITY CHART OF DESUPERHEATER NOZZLE

capacity in l / min of water by following pressure difference (Δp)

type	thread	1 bar	2 bar	3 bar	4 bar (test pressure)	6 bar	8 bar	10 bar
H 02	R1/4"	1.15	1.60	2.00	2.30	2.80	3.20	3.60
		1.85	2.60	3.20	3.70	4.50	5.20	5.80
		3.65	5.20	6.30	7.30	8.90	10.40	11.50
H 03	R3/8"	5.20	7.40	9.10	10.50	12.80	14.80	16.60
		6.85	9.70	11.90	13.70	16.80	19.40	21.70
H 04	R1/2"	8.75	12.40	15.10	17.50	21.40	24.80	27.70
		11.50	16.20	20.00	23.00	28.20	32.40	36.40
H 05	R3/4"	14.50	20.50	25.00	29.00	35.50	41.00	45.80
		23.00	32.50	39.80	46.00	56.30	65.00	72.70
H 06	R1"	29.00	41.00	50.20	58.00	71.00	82.00	91.70
		50.00	70.60	86.60	100.00	122.00	141.00	158.00

other capacities on request.

FOR ORDERING WE NEED FOLLOWING INFORMATIONS

Field of application

medium to spray (viscosity)
fitting position / spray distance nozzle – spray area
temperature range
frequency range

Nozzle specification

type of material
desired spray angle
nozzle type
connection thread
desired capacity (l/min, l/h)
operating pressure (bar)